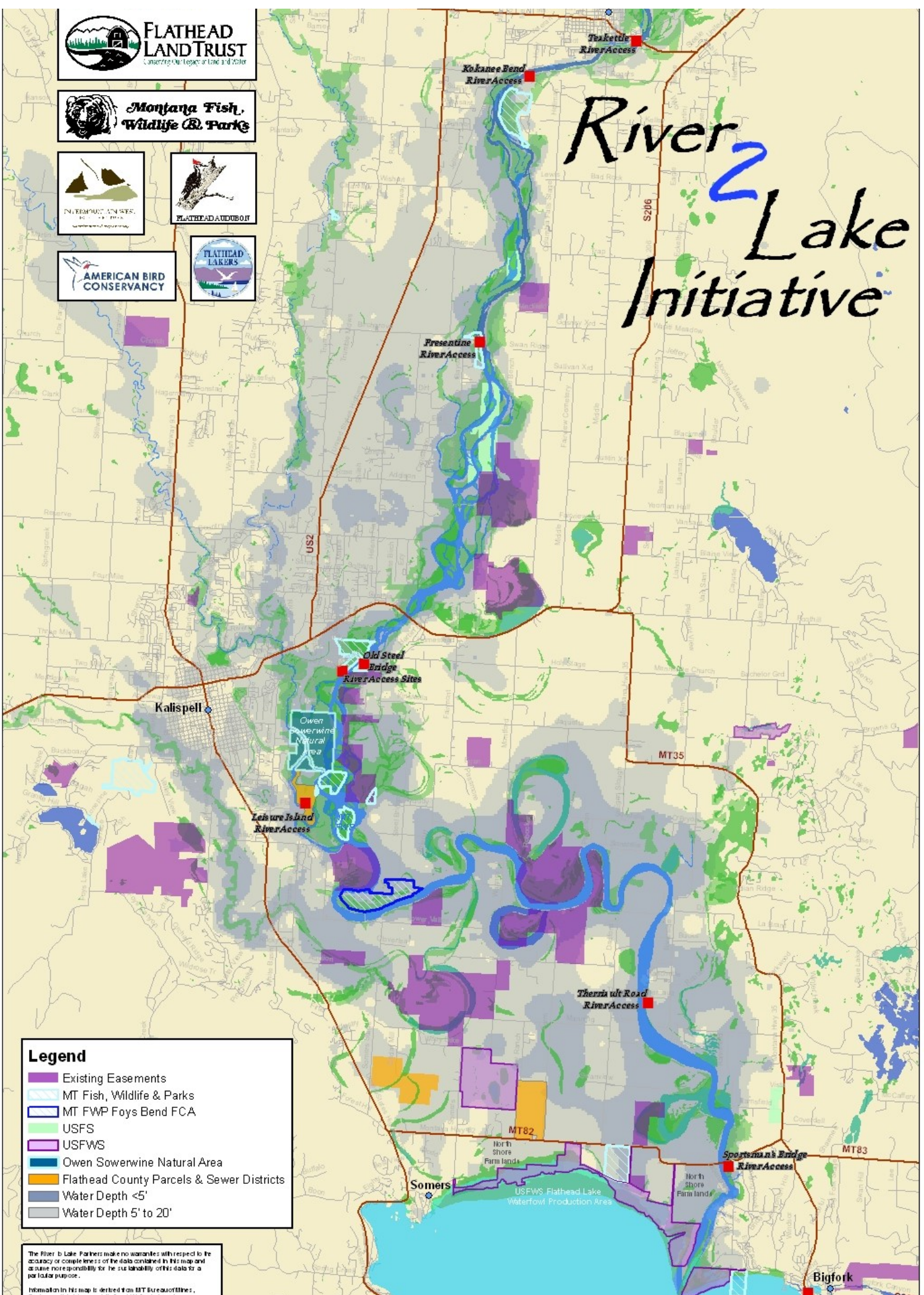




River² Lake Initiative



Legend

- Existing Easements
- MT Fish, Wildlife & Parks
- MT FWP Foys Bend FCA
- USFS
- USFWS
- Owen Sowerwine Natural Area
- Flathead County Parcels & Sewer Districts
- Water Depth <5'
- Water Depth 5' to 20'

The River 2 Lake Partners make no warranties with respect to the accuracy or completeness of the data contained in this map and assume no responsibility for the suitability of this data for a particular purpose.
 Information in this map is derived from MT Bureau of Mines.
 Flathead County, Montana, and Flathead Lake, Montana.