



Flathead Lake MONITOR

WINTER 2022 // 2021 ANNUAL REPORT



Photo: Jay Cross

Return service requested

PO BOX 70 | POLSON, MT 59860

FLATHEAD
LAKERS
DEFENDERS OF THE WATERSHED



Non-Profit Org
US Postage
PAID
Permit No. 20
Kalispell, MT



Photo: Karen Nichols

Of Critical Importance

20 YEARS OF COORDINATING CONSERVATION IN THE FLATHEAD VALLEY

It is easy to play along the shores of Flathead Lake or fish its deep waters and not think about the massive amount of water that moves through this entire area. Flathead Lake is not a closed system, but part of a watershed that drains nearly six million acres of mostly pristine landscapes.

In 1999, facing haphazard growth and development across the valley, the Flathead Lakers felt the urgency to expand focus beyond the shores of Flathead Lake to understand and protect this system of scenic rivers and streams that provide the lake with fresh, clean water.

The Flathead Lakers brought together resource managers, conservationists, and scientists, some at odds with each other, to identify land that is critical to maintaining clean water in our watershed, and to find common ground to protect those lands. These riparian lands are breathtaking, but also support diverse animal and plant life and function as a filter for pollutants that are picked up by storm water runoff... allowing cool, clean water to find its way into Flathead Lake.

This group, now the Flathead River to Lake Initiative, includes local landowners – the lifeblood of this project; the Flathead Land Trust; Montana Fish, Wildlife, & Parks; Montana Land Reliance; Flathead Audubon; Confederated Salish & Kootenai Tribes; Flathead Conservation District; Natural Resource Conservation Service; City of Kalispell; and the Flathead Lakers.

The strength and commitment of this group has led to:

- protecting over 6,800 acres of critical lands through voluntary conservation easements and land acquisition,
- reestablishing the native plant community at nine stream and river riparian restoration sites, and
- educating our community about the importance of these riparian systems.

The success of the Flathead River to Lake Initiative is entirely due to the hard work of all the partners involved, successful coordination and cooperation, and the landowners who support and believe in preserving their beautiful and critically important lands.

One of the largest single pieces conserved along the Flathead River came from the Dr. Glenn Johnston family. Dr. Johnston, who recently passed away, recalled being told by a real estate consultant to “never fall in love with the land... it will interfere with your business decisions...” Dr. Johnston’s response was, “what better thing is there to fall in love with?”, and protected 700 acres of farm and forested land and river frontage (only recently surpassed by the 772-acre Bad Rock Canyon project!). The Johnston conservation easement donation was a priceless gift to the valley.



How are we doing?

SINCE 2001, RIVER TO LAKE PARTNERS HAVE CONSERVED 6,800 ACRES OF CRITICAL LANDS IN OUR FOCUS AREA, ADDING TO A NETWORK OF 12,700 ACRES OF PRIVATELY AND PUBLICLY PROTECTED LAND ALONG THE FLATHEAD RIVER AND NORTHERN SHORES OF FLATHEAD LAKE.

SCIENCE



To inform our conservation efforts, we worked together with the Flathead Lake Biological Station, local and state governmental agencies, and conservation groups to develop maps and reports that help inform priorities and actions.

Many Montanans feel this draw to the land. Here in the Flathead Valley, we enjoy abundant wildlife, healthy wetlands, and clean rivers and lakes. We have the advantage of protecting existing wetlands and riparian areas before they are ruined.

The communities around Flathead Lake are again bursting with new construction and development. The more altered and paved our landscape becomes, the more difficult it will be to keep our lake and the waters that feed it clean. Our challenge is to find a balance between smart development in the valley and the awe-inspiring beauty and natural heritage this area has to offer – all which is supported by clean water. Conservation-minded landowners and our River to Lake Initiative partners continue to help achieve this goal.

RIVER BANK 32%



WETLANDS 55%



IMPORTANT AGRICULTURAL SOILS 44%



100 YR FLOODPLAIN 44%



RIPARIAN FORESTS 55%



To learn more about the River to Lake Initiative and our conservation efforts, visit flatheadlakers.org/conservation-restoration.

PERSEVERANCE



The Lakers continue to coordinate the R2L Initiative partnership, bringing stakeholders together to brainstorm, plan, and implement conservation and restoration projects.

Successful partnerships require coordination, and successful projects require perseverance. Our strong partnerships keep going and growing to include new partners and ideas - in fact, the Bad Rock Canyon project was dreamed up 20 years ago and successfully completed last year! Successful collaborations also mean that every partner plays a key role, and we couldn't do it without our partners.

2021 Membership Survey

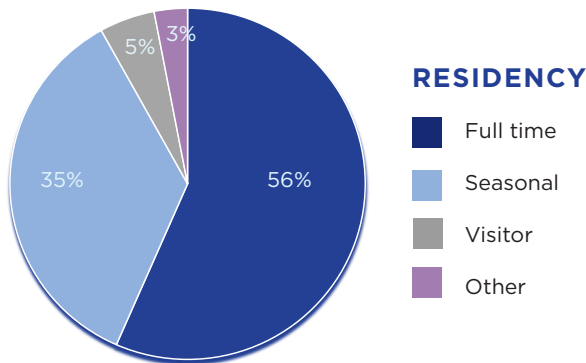
IMPROVING OUR ORGANIZATION WITH YOU IN MIND

WHAT DO OUR MEMBERS THINK?

This past summer, the Lakers sent out a 10-question membership survey to 1200 members through email. We value the voices of our membership, and were thrilled that 215 members responded, approximately 18%. We will use this feedback to better our organization and provide our members with the information and interactions they enjoy.

Most of our members (57%) first learned about our organization through word of mouth... friends, families, neighbors, and colleagues concerned about keeping Flathead Lake clean for generations to come.

Our members are passionately tied to the lake and watershed, and many have been involved with the Lakers for generations. Our members primarily give to the Lakers to build up our community (41%).

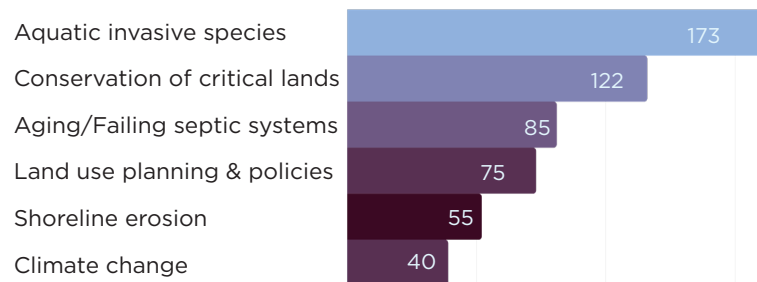


TOP RESPONSES

Our members enjoy reading our printed newsletters (56%) and online publications (77%) to learn more about issues facing our watershed. Most of you read our various publications from cover to cover, and rely on it for updated information about Flathead Lake and Watershed. You also enjoy our in-person events to learn more and gather together with other lake-enthusiasts.

TOP ISSUES

Participants were asked to pick the three most important issues with regards to accomplishing our mission in the Flathead Watershed.



THANK YOU FOR YOUR PARTICIPATION!

Upcoming events

JUNE 7 AT 6:30 PM

Science on Tap-Polson

Steph Gillin, CSKT NRD Information & Education Program Manager, Restoration of the Bison Range to the Confederate Salish and Kootenai, and our progress moving forward. Flathead Lakers Offices.

JULY 7 AT 5:30 PM

Flathead Lakers Annual Meeting

Join us in celebrating our lake and watershed. Learn what's going on in the lake and at the Lakers. Flathead Lakers Offices.

JULY 23

Flathead Lakers Poker Paddle

Paddle for clean water in the return of the Flathead Lakers Poker Paddle to Polson! Prizes, food, music, and tons of fun!

JULY 30

Run for the Love of Flathead Lake

Join us at Volunteer Park in Lakeside for a 5K, 10K, and 1-mile kids fun run (8 & under). Enjoy magnificent views as you run to protect our lake.

AUGUST 4

Summer Soirée

Evening fundraising event with musical guest TOMMY EDWARDS & MAN AND THE BOX. Locally sourced organic dinner and drinks served. Limited number of tickets available.

**MORE DETAILS AT
FLATHEADLAKERS.ORG/
UPCOMING-EVENTS**

Flathead's slimy rocks

TWO-YEAR CITIZEN SCIENCE PERIPHYTON STUDY

Artwork by Sandra Marker

What is periphyton?

Periphyton is the light brown or green slime covering rocks in shallow waters. It is a complex mixture of algae, bacteria, microbes, and detritus, and is a vital part of a lake's ecosystem.

Scientists are just beginning to understand how important periphyton is to the aquatic food web. Periphyton's algae captures energy from the sun, and it is all easily grazed upon by small invertebrates, fishes, and other aquatic animals. Our spectacular Montana fish eat mayflies, stoneflies, and caddisflies, which feed heavily on periphyton.

Why study it?

Periphyton can be an effective indicator of water quality. It is easy to sample and analyze at a relatively low cost. It is also sensitive to environmental changes, especially nutrients and water levels. Adding periphyton to the list of water quality factors monitored around Flathead Lake could help discover localized threats and problems before they become widespread.

Periphyton may also act as a continuation of vegetated riparian buffers by absorbing contaminants and nutrients before they disperse into the water column and move through the environment.

FLATHEAD LAKE MONITORING PROGRAM

The Flathead Lake Biological Station's Monitoring Program (FMP) has studied periphyton at two sites for over 20 years. Over that time, periphyton at each site has increased, but at different rates of change. It is impossible to know why unless periphyton is monitored more thoroughly around Flathead Lake.

FLATHEAD LAKE CITIZEN SCIENCE

Our Lakers citizen science volunteers assisted in an in-depth two-year study of periphyton around the lake, collecting rocks at knee depth once a month during summers 2020 and 2021.

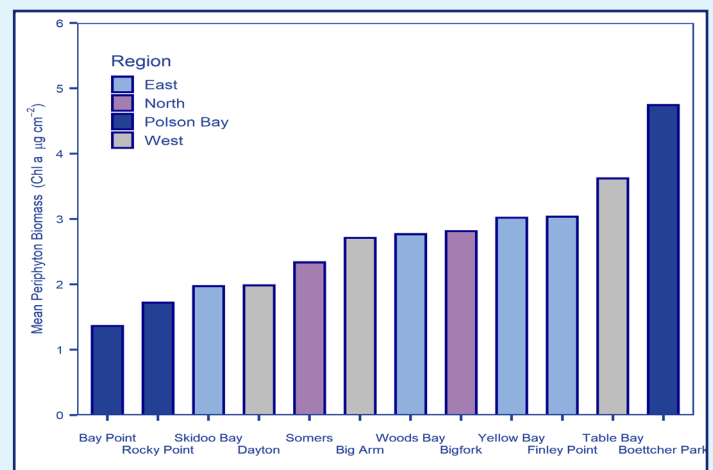
ACKNOWLEDGMENTS

We are grateful to the Greater Polson Community Foundation for their support of this two-year citizen science project, and the time and energy of our amazing volunteers: Jay Barlow, Laura Bean, Lydia Kimball, Marilyn Roberts, Steve Rosso, Roger Smith, Barb Taylor, Jeff Tuttle, and Susan Tuttle. Thank you to our FLBS collaborator Dr. Shawn Devlin, who has built a career studying slimy rocks. He is excited to use these data to further understand Flathead Lake's periphyton story.

Flathead periphyton study

This study focused on shallow periphyton communities, and how they grow once inundated with water as the lake levels rise each summer. Periphyton is very fast growing in Flathead Lake, with biomass accumulating quickly once the lake reaches full pool.

Periphyton biomass was variable around the lake with measurements ranging from zero growth to a high of over 13 Qg cm². However, periphyton was relatively evenly distributed from rock to rock at each site.



The winding nature of Flathead Lake's shoreline could limit primary production in certain shady areas, while other natural topography leads to considerable biomass growth. These patterns are indicative of a healthy oligotrophic lake with active periphyton communities.

Boettcher Park had the highest periphyton biomass, which is not surprising considering its high visitation rates and areas of congregating waterfowl. Bay Point and Rock Point, both located in NE Polson Bay, had the lowest periphyton biomass.

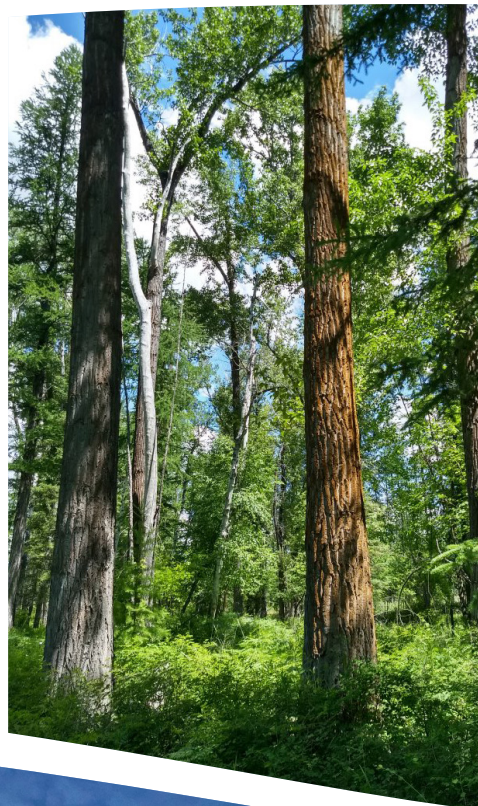
More work is needed to understand these patterns, and how they relate to Flathead Lake's water quality. This preliminary data will bolster future funding proposals and add to our understanding of the lake and watershed.

Stay tuned to our newsletters for a full report. To learn more about our citizen science program, or to sign up for our newsletters, visit [FLATHEADLAKERS.ORG](https://www.flatheadlakers.org).

2021 FLATHEAD LAKERS ANNUAL REPORT



Photo: Jay Cross





2021 Highlights

Over 1,200 members donated \$323,278 to support our conservation and stewardship efforts, our advocacy work, and our education programs.

94 new members joined the Flathead Lakers community! Welcome!

40 sustaining members (16 new!) made a reliable impact on our organization every month with convenient, affordable gifts.

160-acre Somers Beach State Park completed. Lakers supported the new state park by helping raise funds for park amenities, operations, and maintenance.

772-acre Bad Rock Canyon Conservation Project completed, becoming a state Wildlife Management Area. This project protects clean water, vital habitat, and public access along the Flathead River.

The Bad Rock Canyon Conservation Project had overwhelming community support, with 209 public comments made, and 250 individual donors.

Our board volunteers replaced 14 faded AIS signs at public and private boat landings around Flathead Lake (of 21 signs sponsored and maintained by the Lakers).

67th Montana Legislative Session: 1317 bills and resolutions introduced, 752 passed, and 592 failed. The Lakers, with help from our advocacy intern, tracked 22 bills of concern to clean water.

170 local students and 10 volunteers participated in our 'Becoming Watershed Citizens' field trips over three beautiful days in May at the BioStation.

19 citizen science volunteers collected water clarity data and periphyton samples around Flathead Lake this summer.

BOARD HIGHLIGHT

Since the beginning

Behind the camera is a big smile and a lifetime's worth of passion for Flathead Lake.

Laney Hanzel is retiring from our board of directors after years and years of service. Laney became a member of the Flathead Lakers in 1959 when he moved to the area. Serving on the board, he helped guide a young, local nonprofit through decades of growth and change in the valley, keeping the focus on protecting our greatest asset, Flathead Lake.

Laney is a retired Montana fisheries biologist and worked on Flathead Lake for nearly 30 years investigating and monitoring the fisheries of the lake. He helped develop and adapt many of the big water sampling techniques for inland waters. Laney is also a local Flathead Lake Monster historian and record keeper, although he would prefer we say 'creature'.

Laney has been our record keeper too, often asking for a smile as he documented field trips, annual meetings, workshops, board retreats, and so many memories. His institutional knowledge of the lake will continue to be invaluable to our board and staff.

Laney and the Lakers will also continue to archive sightings of Flossie, so be sure to contact us if you see a creature out on Flathead Lake. We will not laugh or make fun, and we will sincerely enter your comments into the historical archives of the Flathead Lake Monster.

Thanking Laney for his years of service is nearly impossible, but the Lakers board and staff are profoundly grateful for everything Laney has done for the Lakers over his tenure.

State of the Lakers

Throughout 2021, YOU and our Lakers community stepped up and showed your commitment to clean water and protecting our watershed for generations. Thank you! Your generous donations supported our efforts to conserve land that is critical to clean water, educate our community in the best ways possible, and advocate for clean water policies at the state level this year.

We are thankful for your support. The Flathead Lakers finished 2021 in a strong financial position, surpassing goals set early in an uncertain year. We will continue to use your financial contributions wisely toward the protection of our lake and watershed.

If you are interested in more financial details from our organization, please contact us.

*Note about expenses. Core mission support \$134,587 breakdown: Membership (envelopes, printing, postage) \$16,553; Financial (accounting software, products for shop) \$25,764; Facility and Equipment (rent, utilities, laptops, software, and repair) \$24,565; and General and Board (retreat facilitation, employee benefits, insurance, training) \$67,725.

Statement of Financial Position

DECEMBER 31, 2021

ASSETS

Current Assets - Unrestricted	\$ 232,142
Current Assets - Restricted	\$ 38,475

TOTAL ASSETS \$ 270,617

LIABILITIES & EQUITY

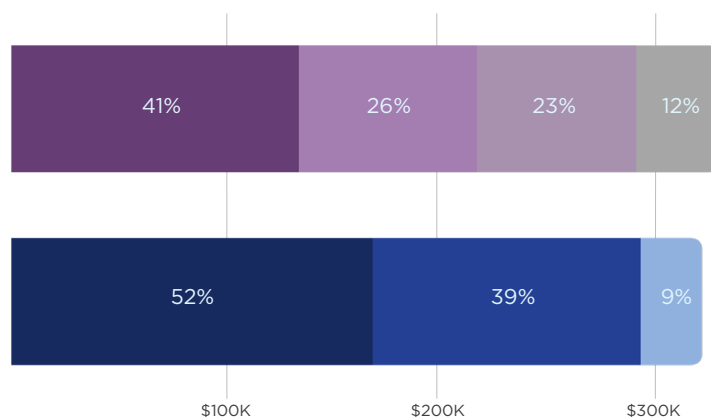
Current Liabilities - Accounts Payable	\$ 8,099
Equity	\$ 262,518

TOTAL LIABILITIES & EQUITY \$ 270,617

2021 Expenses

TOTAL \$332,010

Core Mission Support*	\$134,587
Conservation & Restoration	\$83,493
Education & Science	\$74,666
Advocacy & Stewardship	\$39,264



2021 Income

TOTAL \$323,570

Membership Dues	\$169,193
Donations & Fundraising	\$125,602
Grants	\$28,775

There are many ways you can support the Lakers beyond your annual membership, like donating to our annual appeals or the River to Lake Conservation Fund, joining the Lakers Legacy Circle, gifting a membership, or donating in honor or memory of a loved one.

TO LEARN MORE VISIT
[FLATHEADLAKERS.ORG/HOW-TO-GIVE](https://flatheadlakers.org/how-to-give)

2021 Supporters

THANK YOU!

BAD ROCK CANYON FUNDRAISING COMMITTEE:

Mike and Trish Rodriguez
Bob and Betty Moore
Marilyn Roberts
Steve Rosso

ONLINE ART AUCTION:

Thanks to the generosity of artist Jess Bouchee and the Mission Mountain Art Gallery for donating her beautiful work to benefit the Flathead Lakers' mission and vision.

2021 SCIENCE ON TAP-FLATHEAD SPEAKERS:

Dr. Jay Evans, University of Montana, Covid Vaccine Development

Allan Branine, retired DNRC Swan Valley Forest Manager, Wildfire Safety
Heidi Fluery, Lake County Conservation District

2021 LAKERS COLLEGE INTERNS:

Bryce Kadrmas-Advocacy and legislation
Eric Witts-Social media and digital content

2021 CITIZEN SCIENCE VOLUNTEERS:

Jim Ader
Jay Barlow
Laura Bean
Shawn Devlin
Gayle and Dick Graf
Lydia Kimball
Rob and Nancy Mitchell
Marilyn Roberts
Steve Rosso
Roger Smith
Barb Taylor
Jeff and Susan Tuttle
John Working

2021 LAKERS VOLUNTEERS:

Caryl Cox
Tom Cox
Andrea Crockett
Shawn Devlin
Jim Elser
Monica Elser
Fiona Handler
Stephanie Hummel
Phil Jackson
Amanda Jensen
Darci Jensen
Rachel Jensen
Dee Keese
Janelle Kuechle
Bill McLaughlin
Marilyn Roberts
Ron Roberts
Steve Rosso
Ken Sharr
Roger Smith
Jeff Tuttle
Susan Tuttle

MEMORIAL AND HONOR GIFTS:

In Memory of Virginia Gail Vaughn
Gilchrist Burghardt

Lisa Bertoglio
Michael and Mary Crowe
John Hollowed
Kathy Sampson
Peter and Pam Simonich
Bobbie Whelan and Johnny
Joan Whelan
Janet White

In Memory of Edd Blackler
Janet Blackler

In Memory of Sam E. Booth
Sam and Nancy Booth

In Memory of Jim Buck
Brad and Lisa Dionne

In Memory of Michael Cassidy
Patricia Cassidy

In Memory/Honor of William (Bill)
Crawford

Dennis and Gail Bonawitz
Sue Crawford
Stephen and Joan Herzog
Linda Miller
Jean and Bill Woessner

In Memory of Buck and Jane Guthrie
Wendell and Judy Guthrie

In Memory of Dr. Tom Helmer
Dennis and Susan Campbell

In Memory of Joe Jordan
Vicki French

In Memory of Lois and Duke Miller
Craig and Judy Miller

In Memory of Frank & Bob Mitchell
Brittany Michael

In Memory of My Childhood Optimism
Ian Withrow

In Memory of Meryl C. Patterson and
James L. Patterson III
Dr. James L. Patterson, Jr.

In Memory of Todd Schlapfer
Kate Schlapfer

In Memory of Richard Schleicher
James Hollensteiner

In Memory of Ted Smith
Alexandra Christy
Sara Newmann and Douglas Govern

In Memory of Ellyn Staley
Tammy Balkenbush

In Memory of Eldon Streich
Alyce Streich

YOU helped support the Flathead Lakers' mission to protect clean water, healthy ecosystems, and lasting quality of life in the Flathead Watershed.

In Memory of Isaac Swan
James Viall and Heather Fouty
Robert and Myrna Gauthier
Barry Hansen
Valerie Lindstrom
Robert and Mary Martin
Janelle Kuechle and Bill McLaughlin
Carmine Mowbray
Roger and Libby Smith
Karen and Mac Swan
Mariah Swan and Nevill Wilder
Marvin Wilder
Lois Williams

In Memory of Randy Tolar
Lori and Jack Lerner

In Memory of Brad Treat
Emily Mendoza

In Memory of Mike Urbanic
Joyce Urbanic

In Memory of John H. Wicks
Robert and Sydney McCue

In Memory of Paul T. Williams

In Memory of John H. Wicks
Robert and Sydney McCue

In Memory of Paul T. Williams
Suzy Williams

In Memory of Ted Williams
John Erkkila

IN HONOR:

In Honor of Hilary Devlin
Gerald and Wendy Hardy

In Honor of E.N. Forsch
Cynthia and Daniel Forsch

In Honor of Coach Mark Johnston
Anicia Criscione
Veronica Hibben
Tennille Irish

In Honor of Mark Johnston and Kate
Sheridan
Guro Lindgren

In Honor of Jamie Lenon
Jamie and Peg Lenon

In Honor of Raddie
Amanda Niles

In Honor of Steve Rosso
Tom Rosso

In Honor of Jeffrey and Caroline Sloan
Douglas Sloan

In Honor of S. Royal Smart
James and Sharon McGregor

In Honor of Roger and Libby Smith
Myra Shults

In Honor of Stage 3 of the Flathead
Lake Open Water Virtual Triple Crown /
Conquering the Beast
Terry Carter

In Honor of Paige Taylor
Bret Serbin

In Honor of Johnny Vallo
Jennifer Vallo

In Honor of Kathy Veazey
Lindsey Caras

In Honor of Cameron J. Warren
Beverly Warren-Leigh

2021 BUSINESS MEMBERS

Beacon Tire Center
Bigfork Summer Playhouse
Best Value Port Polson Inn
Center for Native Plants
Eagle Bend Golf Club
Dayton Yacht Harbor
Don Aadsen Ford
Explore Flathead Lake
Far West Boat Tours
Fidelity Title Agency
First Interstate Bank, Polson
Flathead Farm Mutual Insurance Co.
Flathead Lake Brewing Co. and Pubhouse
Forestation, Inc.
Friends of Lake Mary Ronan
Gage Accounting
Glacier Bank
Greg Bain and Company
Gull Ski Shop
Highline Design Company LLC
Hodge's Marine Construction
Jesco Marine and Power Sports
Mann Mortgage
McCrum Construction & Marine
Mission Mountain Art Gallery
Mission Valley Power
Montana Therapy and Consulting
Navigator Travel
Classic Company Boat Works
North Flathead Yacht Club
Northwest Cabinet Works
Nunlist Enterprises, Inc.
REcreate Designs
Kwatagnuk Resort/S and K Gaming, LLC
Sea Me Paddle Kayaking Tours LLC
Sheridan Bros LLC
Slainte LLC
Snappy Sport Senter, Inc.
Somers Bay Cafe
Three River Bank
Total Screen Design & Embroidery
Unity Bank

\$5,000 +

Ian and Nancy Davidson
Brad and Lisa Dionne
James Hollensteiner
Robert Howard
Phil Jackson
Elizabeth Mann
Bob and Betty Moore
Dr. James L. Patterson, Jr
Leif and Amy Peterson
Walter Rowntree and Laura Reynolds
Sliters Corp.
Kathy Caras Veazey

\$2,000 - \$4,999

Lysbeth Anderson and Brent Anderson
Summerfield and Julie Baldrige
Mark and Cheryl Burnham
Jeff and Jennifer Camp
Emily Newmann, Maxine and Sadie Darrah
Jennifer Graham
Blake and Diane Johnson
Rod and Cindy Johnson
Ann Lansing and William Harper
Valerie Lindstrom
Glenn and Penny Malloy
Craig and Judy Miller
Patt and Terry Payne
Franklin Schroeter
Roger and Libby Smith
Eric and Blair Sprunk
Audrey Thorsrud
Benjamin and Katherine Ward
Meg and Stew Weis
Bill and Kristy Whitsitt

\$1,000 - \$1,999

Ben and Anne Binger
Tom and Ann Boone
Sam and Nancy Booth
Brian and Tricia Campbell
Clayton Christian
Tom and Caryl Cox
Sue Crawford
Charlie and Eve Dixon
Bill and Mary Eisenlohr
Flathead Lake Protection Association
Jill Davenport and Jim Goetz
Nanette Nelson and Bob Hall
Paul and Julie Hansen
Jeff and Sandy Hinz
Tom and Kissy Holtz
Doug and Cindy Kelly
Lil and Wally Loewenbaum
Janelle Kuechle and Bill McLaughlin
Kathryn Mercord
Carl and Kristine Muus
Nancy and Alan Nicholson
John and Marilyn Olson
Steve and Arla Rosso
Susan Westrom and Frank Rotondi
Larry and Cara Simkins
Everit and Nikki Sliter
Douglas and Patty Sloan
Monica Lafflin and Norman Smith
Topher and Juliette Smith
Viola Taylor
Tom and Terra Veazey
Suzy Williams

\$500 - \$999

Rob and Marcey Anderson
Steven and Patricia Anderson
Steve Armstrong and in memory of
Linnea Ghilardi
Bert and Kari Arnlund
Rob and Patti Jo Barber
J.M. and Pat Binger
William and Phyllis Bouchee
George and Brenda Brimhall
Judy and Bill Brodsky
Patrick Brundage
Danskin Family
David and Karen Dee
Bill Staack and Kathy Douglas
Craig and Sharla Ekegren

James and Monica Elser
John Emerson
Bruce Ennis and Margaret Davis
Donald and Mary Ann Garner
Robert and Myrna Gauthier
Charles and Helen Gerry
Nicholas Gistaro
Jim Rothe and Shellie Greto
Marcia Grover
Sandi Hamm
Barry Hansen
Richard and Pauline Hartman
Greg and Kate Hertz
Douglas and Catherine Hetrick
Richard and Kaye Hoffmaster
Ann and Marise Johnson
Eric and Jody Jonsson
Joe and Rosemary Jordan
Monica Jungster and Chuck Brasen
David Madsen
Sue and Greg McCormick
Chris McEwan
Bruce and Sharol McQuarrie
Woody and Dani Nedom
Wayne and Kathleen Newton
Stephen and Kim Powell
Kitte Robins
Sue and Steve Rolfing
Mickey Rosa
Auden and Ellen Schendler
Twyla Shear
Katie Veazey and Kyle Smith
Sara Newmann and Doug Govern
Jim and Phyllis Strosahl
David and Jan Swanson
Martin and Donna Ueland
Al Chee and Charlene van der Pyl-Chee
Jim and Margo Walesby
Richard and Margie Walton
Jerry and Susan Woodahl

\$250 - \$499

Pam Ader
Jeff and Loretta Amacker
Dave and Maren Amnotte
Pend and Jena Armistead
Richard and Anna Armstrong
Linda Ashcraft
Donald and Rebecca Bauder
Monte and Catherine Beck
Felicia Bianchi
Gary and Mary Bolhuis
Suzanne Booker
Mike and Jessica Bouchee
Tom and Carol Brown
Andrew Verhalen and Janet Brownstone
Dennis and Andrea Burns
David and Judi Calahan
Dennis and Susan Campbell
Robley Carr
Patricia Cassidy
Stephanie Christensen
C. M. and Janet Clark
Steve and Jennifer Corning
Jennifer and James Coyle
Warren and Sandy Davis
Bob and Shari Dayton
David Duke
Charlene Esget
Mark and Kim Everingham
Don and Janine Fraley
Stuart and Mindy Goldberg
Linda and James Goodrich
Wendell and Judy Guthrie
Rob and Johanna Hanson
Richard and Donna Hartman
Klaus and Joaquenia Heinrich
Carmen Hemmer
Gene and Jan Henneford
Jerry and B. J. Hicks
Susan and Paul Hinman
Glenn and Peg Jarrett
Cameron and Gerri Jewell
Randy and Marcia Johnson
Jeff Jones
Mary Frances and Mike Jones
Dale and Connie Kalberg
Timothy and Martha Kelly
Jeff Kemp

Walter and Nancy Kuhn
Brienne Mitchell and Peter Larsen
Andy and Maria LeStage
Nancy Lewis
Jim and Lois Lodman
Lynn Maas
Mike and Mary McDonough
Eric and Dawn Milliner
Nancy and Rob Mitchell
Tom Moldovan
Brodie Moll
Ed and Kathy Murphy
Leigh Murray and David Smith
Cynthia Mussinan
Katherine Pedersen
James and Janice Phillips
Harriet Randono
Marcia Reimers
Chuck Rigg
John and Roxi Riley
Erlind Royer
Steven and Constance Running
Pamela Ryan
Kate Schlapfer
Richard Schlatter and Family
Andrew Sheridan
Mickey and Jeff Sogard
Craig and Suzannah Spencer
Marty and Julia Sunde
Karen and Mac Swan
Dean and Barb Swank
Mark and Mary Thane
Ron Tjaden
Jan Tusick
Jeff and Susan Tuttle
Keith and Sue Urbach
Mark and Denise VanArtsdale
Dirk and Kim Visser
Bill and Roxane Weikel
Peggy Williams
Lona Wilson
Raymond & Ann Wooldridge
Dick and Monte Wunderlich

\$100 - \$249

Mary Alice Acher
Charles and Edwina Aker
Jeff Amacker
Liahna and Jim Armstrong
Stuart and Mary Beth Arnot
Larry and Dorothy Ashcraft
Margaret Baird
Carl and Cheryl Baldwin
Anne and Tom Bansak
Nancy and Rick Barber
Jay Barlow
Phil and Sandy Barney
Lynn Mastey and Todd Barnhardt
Greg and Doreen Beach
Dr. and Mrs. William Beck
Ray and Connie Beck
Lauralee Bell
Don and Janan Beller
Roger and Sue Bergmeier
Lisa Bertoglio
Carol Bibler and Jim Watson
Janet Blackler
Robert and Jeanne Blue
Mark and Marty Bond
Lowell and Linda Bosshardt
Steve Boyce
Tom and Ann Brooke
Paul Butkay
Cathy Caballero
Charles Cain
Judy Cain
Terry and David Calahan
Lindsay Caras
Mr. and Mrs. John Casbara
Margery Christensen
Michael Christensen
Alexandra Christy
Clifton and Diane Clark
Lane Coddington
Mark and Nancy Jo Connell
Paul Conrad and Ellie Johnson
Kenneth Cook
William Cook - The Cook Family
Joyce and Gary Coombe

Jay and Patricia Cross
Terry and Joan Cummings
Richard and Eileen Dolezal
Phil and Marcia Drescher
Lenny Duberstein and Wanda Walker
Charles and Mary Lynn Eiseman
Anders Engdahl
Royce Engstrom
Felicia Ennis
Jeanne Ensign
Sally Ericsson
Eugene Falkenberg
Michael and Kathleen Farmer
Chris and Catherine Filardi
Carla Daum and Mike Fitzpatrick
Cynthia and Daniel Forsch
Rick Fowler
Teresa and David Francis
Sally Frey
Bob and Sharon Fulton
Cheryl Galipeau
Scott and Gail Galloway
Robbie and Adessa Gauthier
Robert Gilbreath
Tom Graff
Kathryn Grant
Diana Gray
Jack Griffith
C. Joseph and Carrie Grover
Kurtis and Kathy Hafferman
James and Jean Hagan
Mr. and Mrs. John Hammett
David and Marla Hanson
George and Mary Jo Harris
Jack and Binx Harrison
Brian and Laura Hart
Wayne and Diane Hebert
Todd and Holly Henderson
Dennis and Linda Hewitt
Blaine Hibbard
Lynne Hilleboe
Joan and Jim Hinds
Ann Hinnen
Bob Hoene
Randy and Deb Holm
Christine Hopkins
Daniel and Julia Howlett
Richard and Linda Hudak
Kelly Huether
Kimberly Mize and Reed Humphrey
Susan and Gary Hylbak
Thomas Irwin
Kevin Jacks
Helen Jeakins
Barbara Jefts
Wayne and Kaaren Jensen
Al Johnson
Jacqueline McLean-Jones and Bruce Jones
Jean Jones
Paul and Helen Jones
Robert Hyslop and Melodee Jones
Eileen Kane
Greg and Carrol Karlsgodt
Denny and Kitty Kellogg
Bob and JoAnne Kembel
Kevin and Linda Kennedy
Neal and Julie Ketcher
Chuck King
Phyllis Kirk-Parker
Patricia Klever
Brad Kliber
Gary and Marjory Knudson
Ron and Barbara Kohler
Mike and Sandy Kones
Jim and Lynn Kouf
LouAnne Krantz
Suzanne Shaulis and Jim Krosky
Thomas and Kathleen Kurdy
Julie Kuykendall
Jean Kvande
Keith Lanier
Jane Laraby
Kurt and Carol Larson
Don Laws
John and Lisa Leichtfuss
Jack and Lori Lerner
Jeff and Cindy Lewis
John and Cissy Little
Don and Joni Lodmell

Paul Longfield
Jennifer Louquet
Laurie Macarty
Holiday Madich
John and Peggy Manning
Alberto Marigo
Swithin McGrath and Ronald Matelich
Scott and Karen Matthews
Keith Maurer
Tom and Barbara Maxwell
Don and Donna McCammon
Robert and Sydney McCue
Pat McDonald
Tom Hayes and Liz McGoff
James and Sharon McGregor
Mick and Carol McKeon
Lynn McNamer
Lucia McSpadden
Emily Mendoza
Peter and Renee Metcalf
Ferd and Carole Meyer
Mary Kimmel and Nels Mitchell
Richard and Roxanne Mitchell
Ryan Mitchell
Palmer Moe
Randy and Jim Mohn
Don and Debby Morgan
Michael and Lori Morin
Carmine Mowbray
Marie and Marty Mumma
Roger and Nancy Munro
Scott and Lisa Murphy
Paul Mutascio and Jill Gotschalk
Fred and Sherry Nelson
Helen Nelson
Peter and Carol Nelson
Steve and Shirley Nelson
Norm and Sally Newhall
Dan and Carole Novinski
Bob O'Neil
Tim and Mary Obermiller
Jim and Debbie Ofstad
Randy and Gini Ogle
Bernard and Joyce Olson
David Page
James Paisley
Jean Pfeiffer
Lisa Bennett Pierson
Garry and Christine Pitts
Tim and Marti Plunkett
Gary Prescott
Elizabeth Preston
Judy Preston
Johanna Bangeman and Lisa Prugh
Paul Rana
Don and Barbara Ranstrom
Rusty and Maureen Redfield
Ken and Marjorie Reger
Linda and Jim Regnier
Michael Reid
Percy Laube and Joan Ridell
Marilyn and Ron Roberts
Dan and Jan Robertson
William and Nancy Robinson
Holly Hand and John Rodwick
Jim and Delores Rogers
Sharon and Jody Root
Ann Ross
Paul Rosso
Tom Rosso
Sid and Lynette Rundell
David Ryan
Dave and Dee Sample
Bob and Donna Sauers
Peter and Karen Saunders
Scot Schermerhorn
Joan Schleicher
Nancy Schuren
Rose and Don Schwennesen
Tim and Karen Scott
Jim and Laura Scoville
Candace Shaeffer
Steve and Lynn Sherick
John and Pam Sheridan
Donna Sherron
Flora Shultes
Richard and Joan Siderius
Gayle Siemers
Bruce and Cynthia Sievers
Bernie Slogotski

Georgia Smies
Merlyn and Marie Snavely
Joan Snyder
Michael and Laura Snyder
Marcille Sohlberg
Charles Starbuck
Larry and Dora Lee Stephens
Lillian Stephenson
Rob Sterling
Laurie and Ralph Stone
Randall Stuber
Ron and Marcie Stuewe
Jan and Joe Super
Charles Sutfin
Tom and Becky Sutton
Jo Swenson
John and Sue Talbot
James and Betty Thompson
Michael and Tula Thompson
Debbie Thrailkill
G. Donald Stillie and Pamela Totten
Glenn and Peggy Tremper
John and Mary Ellen Turmell
Jaime and Tara Uziel
William (Fred) Vanhorn
Donald and Mary Vanlandingham
Kristen and Peter Von Doersten
Hans and Gretchen von Rittberg
Michael Wallace
Dick and Kathy Walsh
Kyle Watson
Vicki Watson
John Webb
Jerry and Toni Whealon
Jon and Karen Whitehair
Gary and Teresa Whitney
Nina Wickersham
Tana and Onno Wieringa
Lois Williams
Roger and Lynn Winkle
Ian Withrow
Connie and Marty Woldorff
Jan Olsen and Dennis Wolfe
Bill Yankee
Steven and Kimberly York
Michael and Pamela Young
Jody Zadra and Wes Sprunk

\$1 - \$99

Dave and Lois Abell
Linda Almquist
Anne Lockwood and Ruth Anderson
John and Susan Anderson
Lisa Autio
Tammy and Bob Balkenbush
Greg and Kathy Barkus
Roger and Beth Barth
Marty, Jodi and Hunter Bishop
John and Mary Blair
Carroll Blend
Rex Boller
Bill and Chris Bond
Steve Braden
Thomas and Susan Bradley
Bill Brenner
Mark and Wendy Brooke
Patti and Ralph Brown
Ralph and Connie Brownell
Robin Bruce
Marj Burgan
Jack Burt
Clarice and Bill Bush
Terry Carter
Daniel and Susannah Casey
Caroline Casteel
William Cerny
Matt and Holly Church
Linda Clark
Gary and Carol Cockrell
John and Bobbi Combs
James and Opal Congdon
Corwin Consultants
J.D. and Frances Covington
Gayle Crane
Steve and Sue Cummings
Sarah and Bill Dakin
Greg and Wendy Danskin
Melanie Dardis
Shadra Denson, Denson Ranch

Nancy and Charles Deschamps
Hilary and Shawn Devlin
Mark and Sandra Dobday
Elizabeth Doty
Richard and Nancy Doughten
Noel Drury
Terry and Loretta Druyvestein
Roger and Shelley Duber
Bernadette Dufour
Clara Eckman
Bonnie Eddy
Peggy Edgar
Gary and Janet Elliott
Scott and Lois Ellis
Gary and Alice Erb
Miles and Karen Finch
Clinton Fischer
Robert Ford
Philip and John Fulton
Ed and Diane Gannon
Janelle Gentry
Philip and Carole Gilbertson
Rosie Goldich
Laura and Brian Golphenee
Bill and Jana Goodman
Robert and Tana Gornick
Kari and Wallace Gosney
James Rubin and Margaret Gough
Barbara Gould
Dick and Gayle Graf
Bill and Mindy Greer
Karen Grimm
Dennis and Deb Grue
Karen Gunderson
Dave Hadden
Bill Haines
Charles and Myrna Hall
Barbara Hammons
Robert and Janet Hardy
Shirley Harrison
James and Norma Hawbaker
Bob Hawkins
Michael and Karin Henion
Boyd Henneman
Ron and Karen Hoff
Dr. Steve and Jan Irwin
Wesley and Karen James
B. J. and Gerrie Jeske
Corinne Johnson
Gene Johnson
Kim Pinter and Gil Jordan
Joe and Mary Pat Kasperick
Cook / Keese Family
George and Wendy Kingston
Robert and Lucy Kobos
Leta Kopp
Dan and Kari Koskinen
Glenn and Noreen Kozeluh
John and Elizabeth Laimbeer
J.J. Lamb
William Larson
Everett Leitzke
Mark and Emily Lennon
Casey Lewis
Gai Linne
Clayton and Lonna Linnell
Brad and Carla Luck
Jane and Sandy MacKay
Dale and Sue Mahlum
Whitney Hudak and Scott Matagrano
Carl and Neta McAfee
Dan and Carolyn McCarthy
Drew and Lori McCarthy
Valeri and Allan McGarvey
Jeanette and Mike McKee
Jayne McManus
Cecily McNeil
Charles and Cathy Meyer
Neil and Dixie Meyer
Jory and Brittany Michael
Linda Miller
Lois Miller
Steve and Lee Miller
Joan Monaghan
Mike and Tanis Nelson
Don and Gail Nevin
Amanda Niles
Shawn Dehne and Bruce Nordstrom
Abbott and Jacqueline Norris
Clifford and Lynn Nystrom

Jerry and Jeanne O'Neil
George and Faye Olsen
Joe and Kim Orr
Karen and Butch Pannage
Linda Papke and Jean Hagyard
Jeffrey Paronto
Sheena Pate
Don and Mary Patterson
James Payson
Mary Peele-Masek
Rosalie Perelli
Denise Peterson
Lorin and Audrey Peterson
Lisa Phillips
Rosemarie Phillips
Pamela Shore and Thomas Power
Leonard Prescott
Schuyler Hudak and Nicolas Prionas
Ryan Provencher
Mary Jo Pugh
Quiet World Sailboats
Steve and Christine Readdick
Dan and Judy Regan
Lar Autio and Susan Ridgeway
Mike and Connie Rippe
Bryan and Marie River
Bill and Pat Roath
Allen Rodgers
Melody Rohrer
Angel Rosario
Flossie Ross
Keith and Viv Ross
Tom and Sue Roy
Hal Roys
Howard and Fran Ruby
John and Carina Russell
Kathy Sampson
Gordon and Barbara Schlabs
Marty Schnell
Jock Schwank
Corinne Schwartz
Bret Serbin
Carol Sessions
Kate Sheridan
Marjorie Sherwood
Myra Shults
Albert Silva
Byron and Kalmia Smith
Paula and Bob Smith
Stanley and Margie Smith
Stevadore Smith
Geraldine Stephens
Howard Stephenson
Jo Anne Stewart
Margaret Stoneking
Bob Storer
Fred and Gayle Stout
Alyce Streich
Steve and Joanne Tanner
Boyd and Robbie Taylor
James Thane
Joan Thuma
Clancy Cone and Bobby Tilton
Linda Tootell Thomas
Ken and Linda Torgerson
Richard and Claire Trauth
Bill and Kathy Trautman
Susi Hauser and Bruce Tremper
Jean Triol
Lloyd and Cathy Twite
Jennifer Vallo
Constanza von der Pahlen and Adrian
Leighton
Paul Wachholz
Stephen Walter
Rachel Wanderscheid
James Warford
Teri Warford
Beverly Warren-Leigh
Dan Weinberg
Matthew Weld
Janet White
Beau and Holly Wielkoszewski
John Wing
Thomas Winter
Elizabeth Winters
Jean and Bill Woessner
Bill Wyckman

Thoughts from the Lakers' "Lead Guide"



ONNO WIERINGA

Onno Wieringa is the Flathead Lakers' new President. We appreciate his commitment to our organization.

I was born in Conrad, Montana, and through a good part of my childhood we spent a lot of time recreating on the Middle Fork of the Flathead River and the various lakes in the Flathead Watershed.

After graduating from Montana State, one of my life projects was being one of the founders of the Glacier Raft Company, with operations in West Glacier, Polson, and other places around the West. I spent 40 years there making a living off the clean, abundant waters that flow into and out of Flathead Lake. Through that time, I became aware and concerned about the pressures and threats to the Flathead Watershed.

A few years ago, Steve Rosso, a longtime friend and

Lakers board member, asked me if I would consider joining the Lakers Board to help him and the other volunteers that work to protect the Lake, and I gladly agreed.

My role is to be a "lead guide" for a couple of years to help our capable paid staff as they plan and implement the strategies that our Board-Staff planning retreats have chosen to be our direction, as we deal with pressing threats and emerging opportunities that face our Lake. I will work to keep us evaluating all we do against our mission.

Through all of this, I will make sure we communicate with you, our members, so you not only know how we are spending your contributions, but to help you stay abreast of all that we know is going on relative to the Lake.

Thank you for being Flathead Lakers. I also ask that you find one new person that should be a Lakers member and convince them to join our effort. We need all the help we can find to take care of our Lake.

Thanks! Onno

The Flathead Lakers welcomed two new faces this January

Amber Stanfield is both a new face and holds a new position at the Flathead Lakers, that of Development Associate. Amber will be supporting Executive Director Kate in fundraising duties, as well as planning and carrying out events, including this summer's Poker Paddle, Soirée, and more (see the events section for more information).

Amber grew up and went to college in Western Montana, and we're thrilled to have her science background, creative talents, and business expertise aboard the Lakers!

Bryce Kadrmas, a recent UM EVST graduate, served as the Lakers' Legislative Intern during the 2021 Montana Legislative Session. Upon completion of her internship, she was recruited to join the Board of Directors and continue supporting our advocacy efforts, as well as increasing the Lakers' presence in Missoula, where she lives and works.



AMBER STANFIELD



BRYCE KADRMAS

FLATHEAD LAKERS

EXECUTIVE COMMITTEE

Onno Wieringa, President
Jan Swanson, Vice president
Nanette Nelson, Treasurer
Monica Elser, Secretary
Tom Cox, Past President

BOARD OF DIRECTORS

Steve Rosso, Dick Siderius,
Jim Hollensteiner, Roger Smith,
Rob Mitchell, Marilyn Roberts,
Eve Dixon, & Bryce Kadrmas

STAFF

Kate Sheridan, Executive Director
Rosalie Perelli, Administration
Constanza von der Pahlen, Conservation & Restoration
Hilary Devlin, Science & Communication
Amber Stanfield, Development

TO LEARN MORE ABOUT OUR BOARD MEMBERS AND STAFF, VISIT flatheadlakers.org/who-we-are